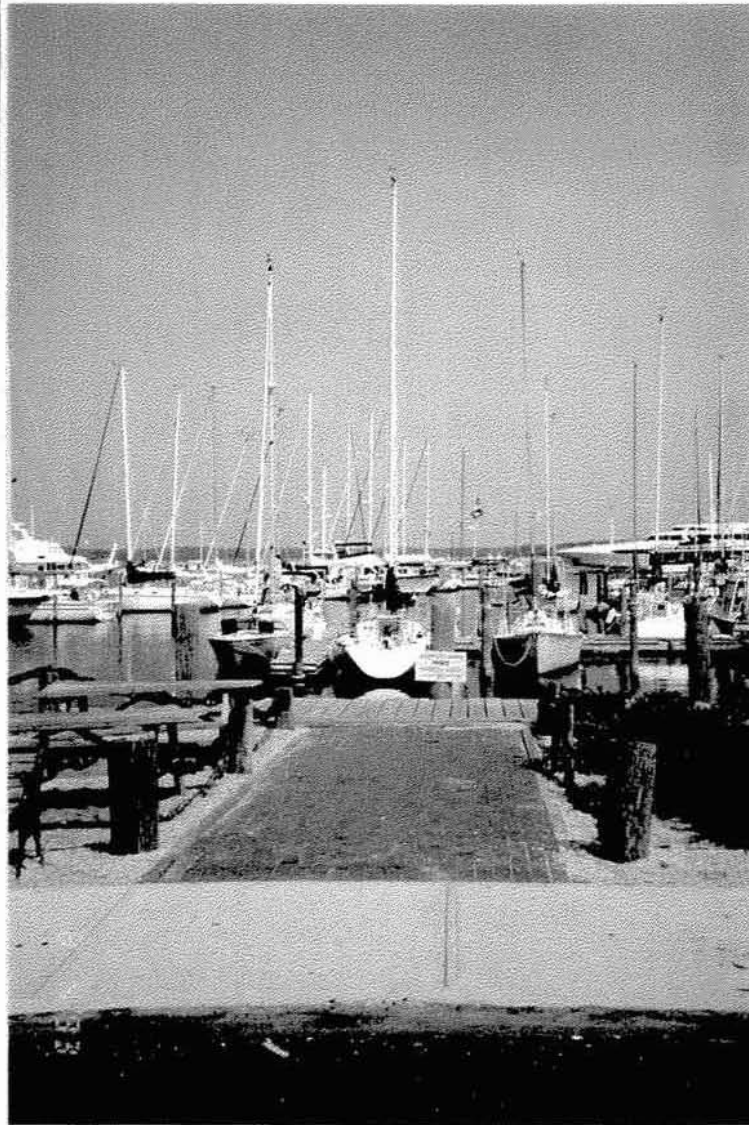


APPENDIX F



MARINA CHARACTER AREA: Sag Harbor Yacht Yard

MARINA CHARACTER AREA: East of Long Wharf





MARINA CHARACTER AREA: Redwood Canal



MARINA CHARACTER AREA: West Water Street



MARINE RECREATIONAL CHARACTER AREA: Haven's Beach



MARINE RECREATIONAL CHARACTER AREA: Marine Park



MARINE RECREATIONAL CHARACTER AREA: Windmill Park and shoreline



MARINE RECREATIONAL CHARACTER AREA: Otter Pond



MARINE RECREATIONAL CHARACTER AREA: Issue -- Long Wharf parking



**MARINE RECREATIONAL CHARACTER AREA:
Issue -- seating and walking**



MARINE NATURAL CHARACTER AREA: Northwest Creek Area



BUSINESS DISTRICT CHARACTER AREA



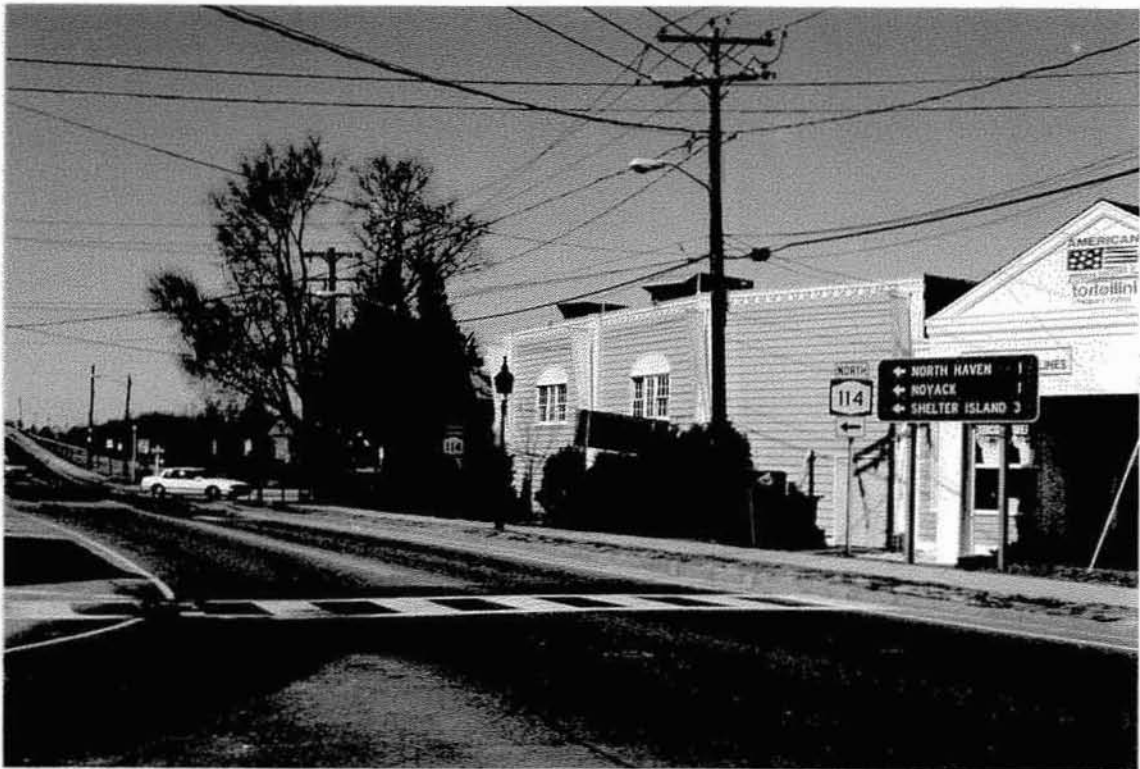
**BUSINESS DISTRICT
CHARACTER AREA**



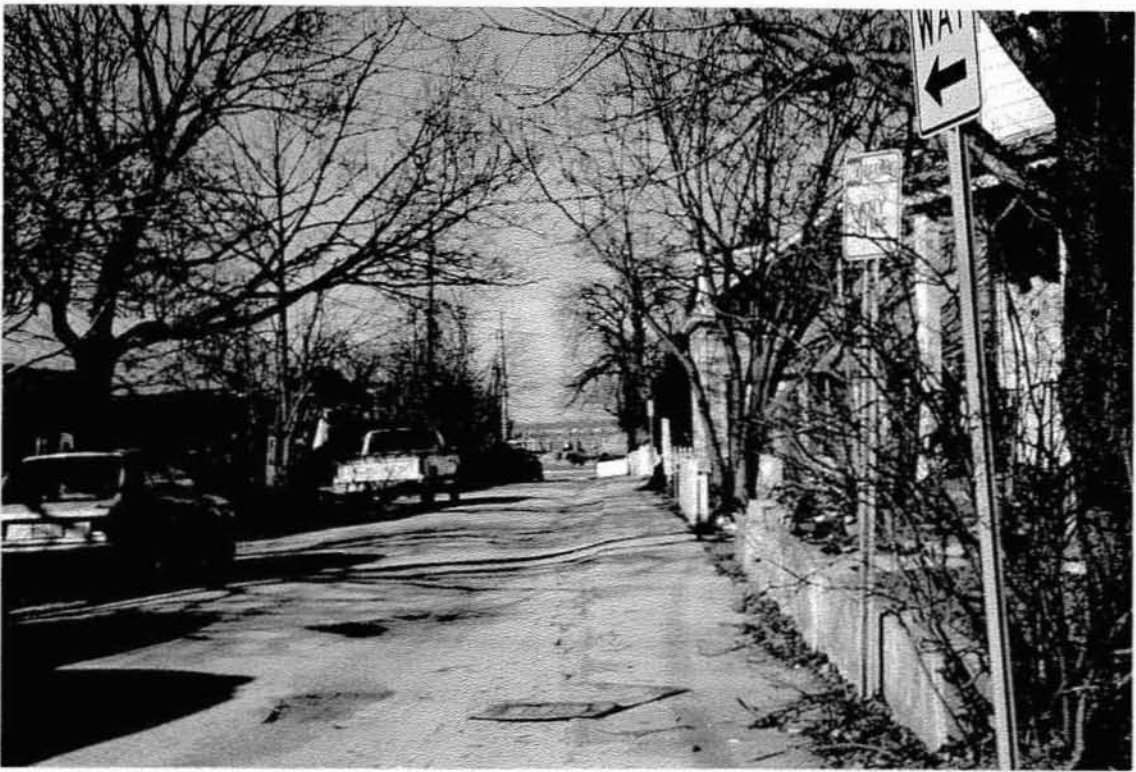
**BUSINESS DISTRICT
CHARACTER AREA:
Issue -- benches**



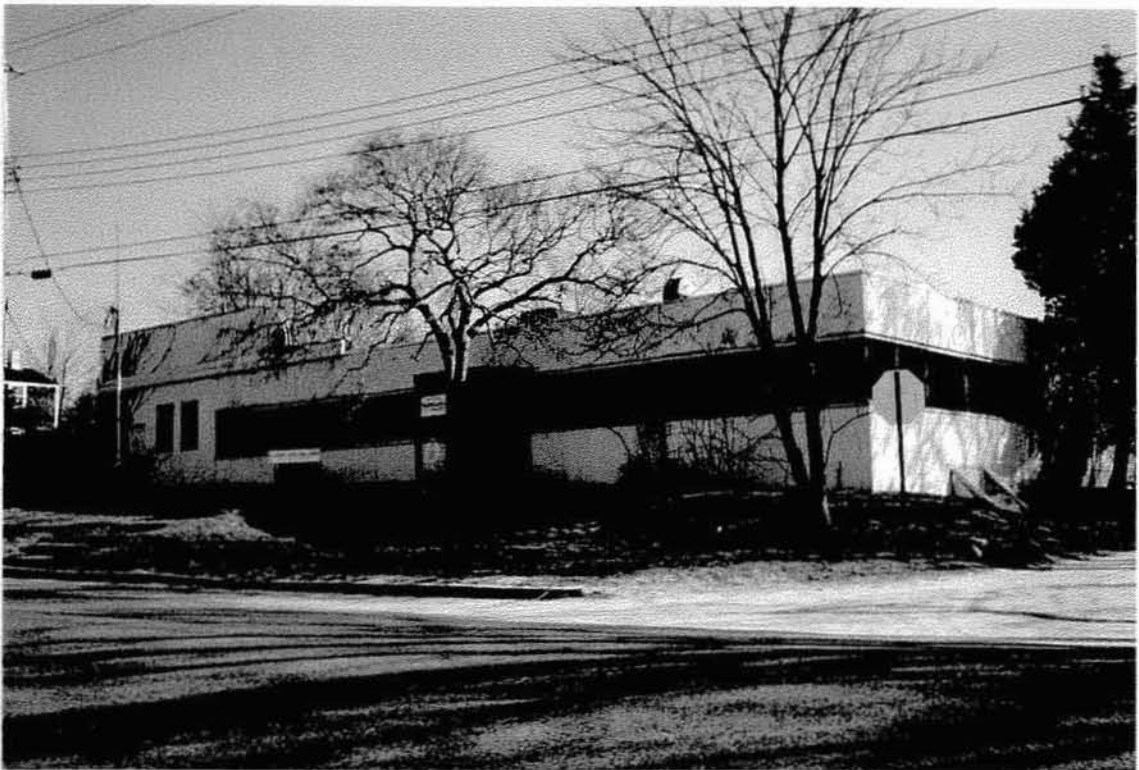
BUSINESS DISTRICT CHARACTER AREA: Issue -- 5-way intersection



BUSINESS DISTRICT AREA: Issue -- signage



RESIDENTIAL CHARACTER AREA: Rector Street



INDUSTRIAL CHARACTER AREA



RESIDENTIAL CHARACTER AREA: Issue -- woodland protection



INDUSTRIAL CHARACTER AREA: Issue -- unused and decaying property



OPEN SPACE CHARACTER AREA: Mashashimuet Park



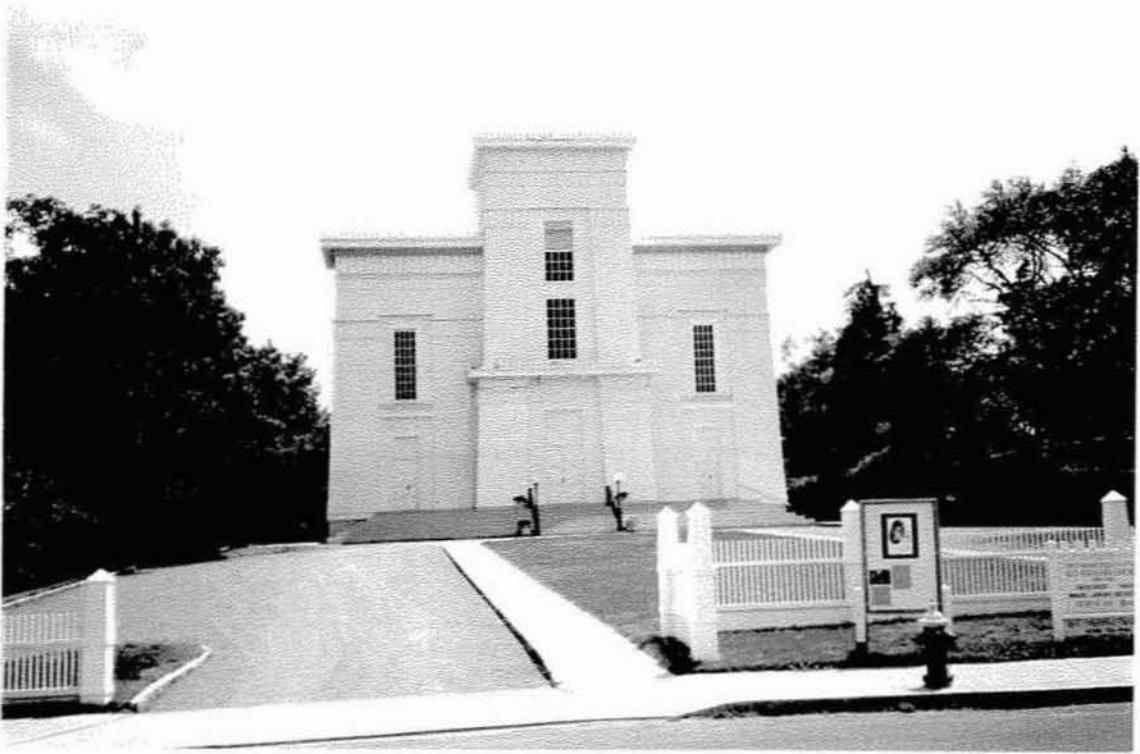
OPEN SPACE CHARACTER AREA: Mashashimuet Park



MULTI-UNIT RESIDENTIAL CHARACTER AREA: West Water Street



MULTI-UNIT RESIDENTIAL CHARACTER AREA: Long Island Avenue



INSTITUTIONAL CHARACTER AREA: Whalers Presbyterian Church



AGRICULTURAL CHARACTER AREA: Cilli Farm



View north from Long Wharf



View east from Long Wharf



View northwest from Windmill Park



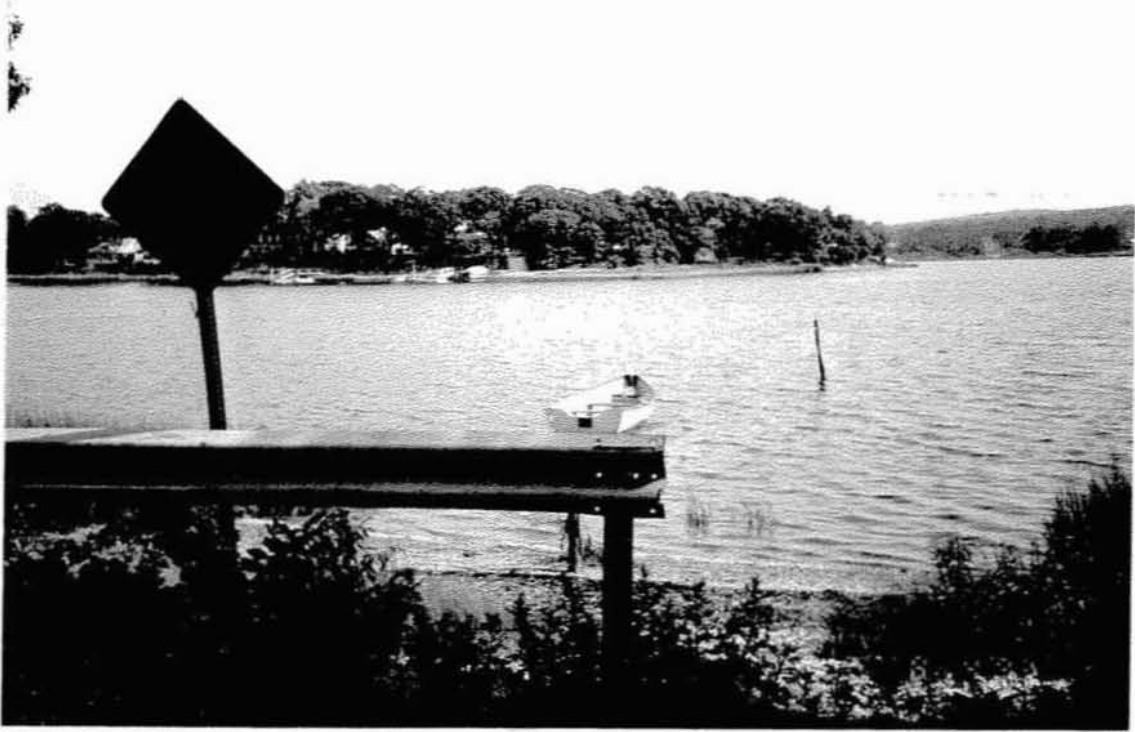
View northwest from West Water Street



View east from North Haven Bridge (NYS Rte. 114)



View south from North Haven Bridge (NYS Rte. 114)



View north from Redwood



View northwest from Redwood



View southwest from Redwood



View south from Redwood



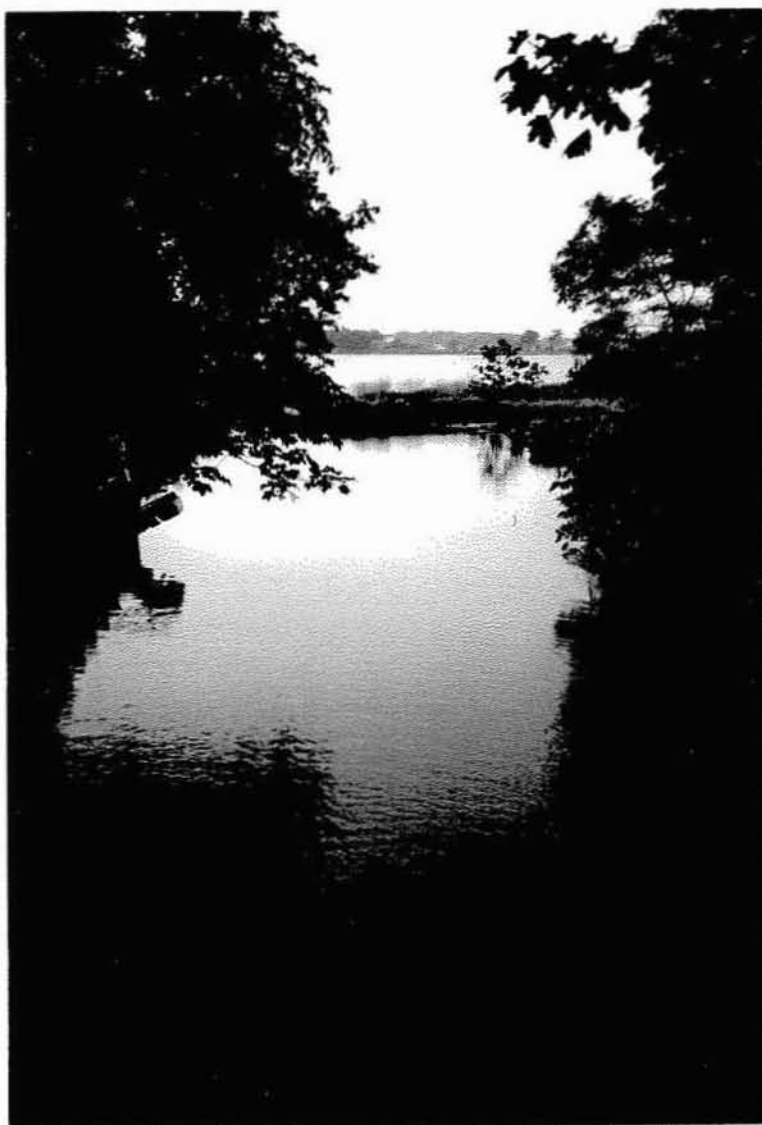
View north from Redwood Avenue - Sag Harbor Cove



View south from Redwood Avenue - Upper Sag Harbor Cove



View southeast from Otter Pond bridge



View northwest from Otter Pond bridge



View northwest from Haven's Beach